

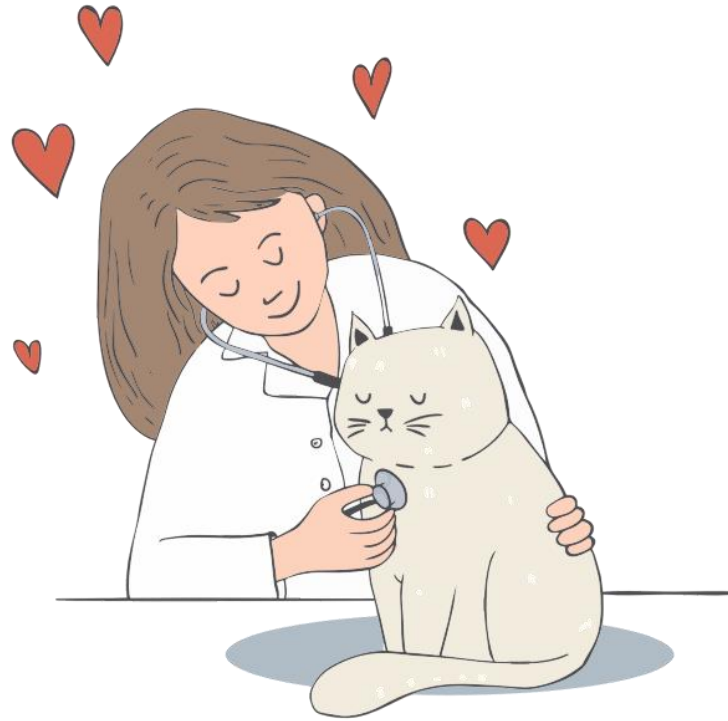


Pet Insurance 5 Tips

Consumer Education and Advocacy Unit



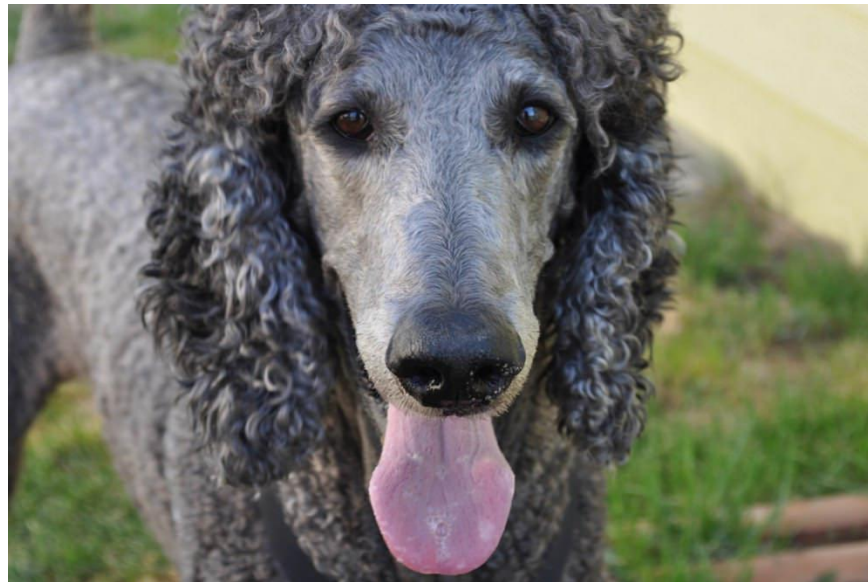
Make sure you understand any pre-existing conditions and breed specific condition exclusions that may be in your policy



Generally pet insurance policies do not cover preventive care, like vaccines, or wellness visits.



If you want to insure multiple pets, you will usually need a separate policy for each



Know your Annual Coverage limit. Typically this ranges from \$5,000 to an unlimited amount.



Typically, you pay your veterinarian directly, and submit the bill to your insurer for reimbursement

Contact Information

Maryland Insurance Administration

800-492-6116 or 410-468-2000

www.insurance.maryland.gov



Maryland Insurance Administration



Maryland Insurance Administration



marylandinsuranceadmin



MD_Insurance

